

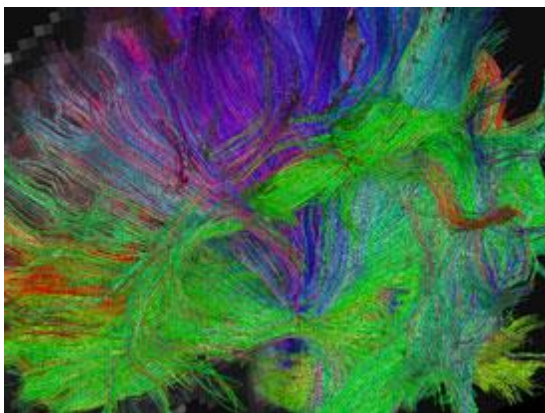
UCLA Neurosurgery Connections



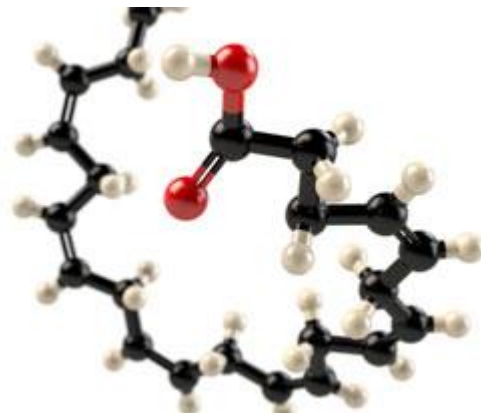
New Interim Chair, Dr. Linda Liau



Device Restores Some Hand Movement to Quadriplegic Patient



Wanted: Women's Brains - Lagging



A Fat That Saves You From Sugar

Research on Female Concussions

Download the new **UCLA Neurosurgery App**

The UCLA Department of Neurosurgery app serves as a comprehensive resource for preparation for neurosurgical procedures, department contact information, and local and onsite hospital amenities. [Download and learn more »](#)



Faculty Spotlight

Luke Macuszyn, MD

Dr. Luke Macuszyn is an Assistant Professor in UCLA and a member of the Comprehensive Spine Center in Santa Monica.

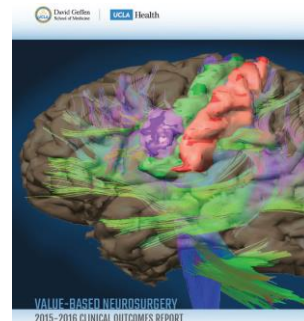
He specializes in the surgical treatment of complex spinal disorders with an emphasis on the correction of spinal deformities in adolescents and adults. [Read more »](#)



Value-Based Neurosurgery

2015-2016 Clinical Outcomes Report

The faculty and staff of the UCLA Department of Neurosurgery are delighted to present this update on our Quality Program. In this edition, we focus on specific programs and diagnoses within Neurosurgery and report on quantitative outcome measures that are relevant to patients with these diagnoses. [Read more »](#) [View PDF »](#)



UCLA MD Chat Webinars

View the UCLA Department of Neurosurgery's collection of webinars on demand.

Topics include:

- Pediatric Epilepsy
- Hemifacial Spasms
- Brain Metastasis
- Aneurysms



[Watch Videos »](#)

UCLA Department of Neurosurgery

Call



For more information about UCLA Neurosurgery, call (310) 825-5111

Click



Visit the UCLA Department of Neurosurgery at Neurosurgery.ucla.edu

Come in



Visit UCLA Neurosurgery in Westwood
Edie & Lew Wasserman Building
300 Stein Plaza, Ste.

420
Los Angeles, CA 90095

Connect with Us

[Find A Physician](#) | [Make an Appointment](#)

[Refer a Patient](#) | [Research](#) | [Clinical Trials](#)



Subscribe

Stay up-to-date on the latest news and information from UCLA Neurosurgery

[Subscribe to Neurosurgery Connections](#)